

4 Reasons to replace hand-held, petrol-powered tools



1

Operator

The workplace health of the operators is at risk.

Harmful noise

Their workplace has unsafe levels of noise - as loud as a plane taking off.

Toxic gases

They work in a toxic cloud of burnt and unburnt fuel & oil.

2

Neighbour

Airport-like noise penetrates the surrounding streets.

Unacceptable noise levels

The level of noise is double that of most standards.

Unreasonable intrusion

The strong, low frequency sound penetrates buildings.

3

Community

The tools generate local pollution which harms health.

Breathing

Breathing disorders are made worse and cancers are triggered.

Health Emergency

Local air pollution increases hospitalisations, hastens death.

4

Climate

The tools generate 22x more emissions per minute than a car.

High GWP emissions

Methane & N²O are 30 and 300 times more warming than CO².

Long-lasting

Methane and nitrous oxide last in the atmosphere for 100 years.

Tool noise

The operator is surrounded by harmful noise

Tool manufacturers report that hand-held, petrol-powered tools can generate noise above 110dB(A).

In workplace safety guidelines, noise above 85 dB(A) is categorised as 'unsafe'.

The maximum safe-working period for 100dB(A) noise is 15 minutes.

We can
Electrify tools to eliminate OHS risk from noise.



Toxic exhaust

The operator is enveloped in a cloud of toxic gases

Tool operators breathe nerve damaging and poisonous carbon monoxide; carcinogens such as benzo(a)pyrene, benzene and 1,3-butadiene, formaldehyde, acrolein; nitrogen oxides which can be harmful to the blood, immune, nerve and reproductive systems; and micro particles of soot which worsen conditions like heart disease, asthma and diabetes.

We can
Electrify tools to eliminate OHS risk from toxic gases.



Local noise

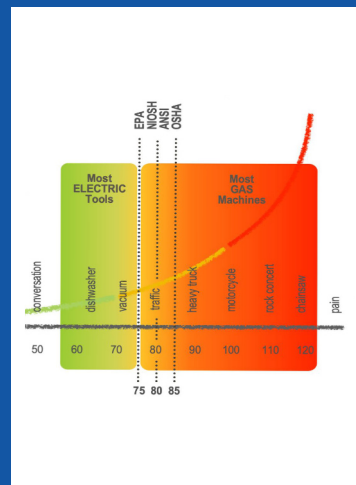
The tools make neighbourhoods unnecessarily noisy

A blower can project 65–80 dB(A) for 60m - more than double the daytime sound standards set by the World Health Organisation (55dB(A))

Noise above 55dbA from a petrol blower can be intrusive at 250m.

Blower noise easily penetrates windows which is rated as 'unacceptable' by the EPA.

We can
Electrify tools to reduce neighbour noise.



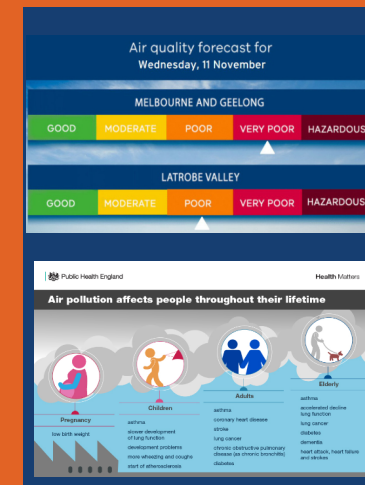
Local smog

Tool exhaust makes people sicker and can kill them

At times, small petrol motors contribute 10% of overall air pollution in Australian cities, 9% of man-made particulates and 20% of total man-made volatile organic compound emissions.

Tool pollutants worsen conditions like heart disease, asthma and diabetes and kill people before their time.

We can
Electrify tools to reduce harmful local smog.



Climate harm

The tool exhaust accelerates global warming

Small petrol motors are more harmful to the climate than car engines.

Operating a lawn mower for one hour emits as much pollution as driving a mid-size car from Melbourne to Mt Gambier.

Operating a leaf blower for one hour emits as much pollution as a car trip from Melbourne to Sydney and back again.

We can
Electrify tools to reduce global warming gases.

